



Finnacle  
Shah  
Classes

**FinBridgeProgramme**

**Become a FinExpert<sup>®</sup>**



Finnacle  
Shah  
Classes

Producing India's **YOUNGEST & FINEST FINANCE PROFESSIONALS** through skill focused experiential learning

Pioneers in Finance professional courses across Mumbai (since 2003) & Surat (since 2014) and have trained more than 18,000 students till date.

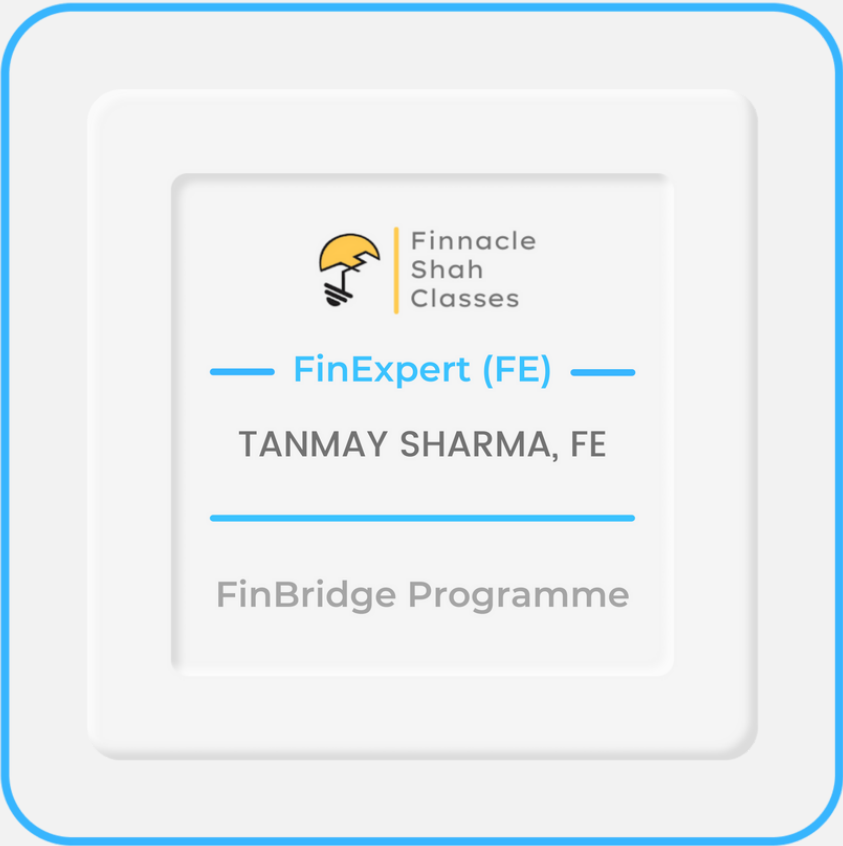
Faculties with almost two decades of training experience and Ex-professionals from revered corporations like **Goldman Sachs, Perfect Research and Morningstar.**

# Certification



FinBridge program trains 12th Pass candidates for the most coveted and competitive Finance profiles of investment banking, portfolio management, equity research and venture capital. We bridge the HUGE MISMATCH between the practical world and the academic world. Our program will remove the struggle & pain of entering the dream careers of finance.

On clearance of the program, a student is awarded the coveted **FinExpert** title, prefix “**FE**”



# Why FinBridge?



## Packages

Median Starting  
Package of UG  
Fresher



6 Lakhs

Highest Package at  
Undergrad of  
Fresher



10 Lakhs

Highest Package  
Cash Fixed



14 Lakhs

## Placement Stats

Youngest  
Offer at

18

Median Age  
of Entry

20



# 60+ Campus Recruiters

41%

PMS & Equity  
Research

18%

Venture  
Capital

27%

Investment  
Banks

14%

Wealth  
Management



**HK Sudhindra**  
Partner | Blue Banyan

We at Blue Banyan have recruited a candidate from Finnacle and it's no exaggeration to say he has far exceeded our expectations. I have personally taught at some well known B-Schools and it is clear that the Finnacle course content is far better suited to the needs of capital markets players than what's taught elsewhere.

**Vinit Rai**  
Executive Director, Private Equity | JM Financial

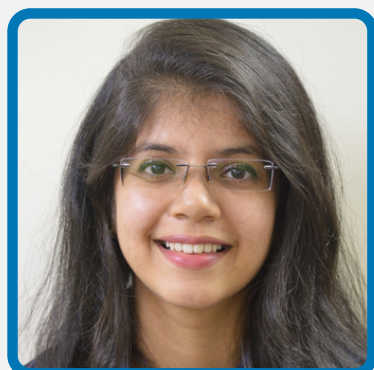
The candidate has been assisting the team in investment opportunity screening and detailed evaluation and she has done a fantastic job so far!! She has helped a lot by taking initiative and doing primary market research and supplementing it by competitive profiling of the space.. All in all, your institute is doing a terrific job!!

**JM FINANCIAL**

(\*) Includes One Private Equity Recruiter

# Recent Campus Placement

## Full Time Conversions



**Laveena Jagwani**



SEP Ventures  
Venture Capital



**Shreya Sahu**



SEP Ventures  
Venture Capital



**Kenil Mehta**



Omkara Capital  
Equity Research



**Zaid Munshi**



ValueQuest Capital  
Portfolio Management



**Shivam Parekh**



Omkara Capital  
Equity Research



**Yash Tanna**



ithought  
Portfolio Management



**Darshil Doshi**



SEP Ventures  
Venture Capital



**Pranay Shah**



Felix Advisory  
Investment Banking



**Tanishq Mehra**



SEP Ventures  
Venture Capital



**Rikin Shah**



Omkara Capital  
Portfolio Management



**Nikhil Jain**



Sutherland  
Equity Research



**Rohan Bhambhani**



Felix Advisory  
Investment Banking



**Taha Siamwala**



Piper Serica  
Equity Research



**Ahmedh Madha**



Unifi Capital  
Portfolio Management



**Deep Gandhi**



Astute Investment  
Portfolio Management



**Divyansh Agarwal**

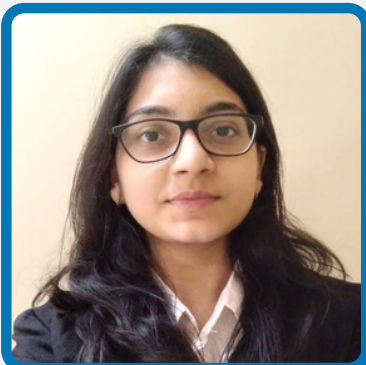


Felix Advisory  
Investment Banking



# Recent Campus Placement

## Full Time Conversions



**Moksha Shah**  
E Q Capital  
Investment Banking



**Ayushi Patel**  
SEP Ventures  
Venture Capital



**Jamal Qureshi**  
SEP Ventures  
Venture Capital



**Urvi Narsaria**  
SEP Ventures  
Venture Capital



**Vishal Gurnani**  
SEP Ventures  
Venture Capital



**Yashika Narang**  
Multiple  
Equity Research



**Mohammed Patel**  
Care PMS  
Portfolio Management



**Akshay Chheda**  
Perfect Research  
Portfolio Management



**Amey Chheda**  
Banyan Capital  
Portfolio Management



**Neeraj Singh**  
Phoenix Advisers  
Investment Banking



**Shivangi Goyal**  
Buoyant Capital  
Portfolio Management



**Gautam Gosar**  
Perpetuity Ventures  
Portfolio Management

# Recent Campus Placement

## Full Time Conversions



**Disha Jugat**  
JM Financials  
Private Equity



**Neeraj Bajoria**  
Knowcraft  
Investment Banking



**Kumanika Chhajer**  
Solidarity Investment  
Portfolio Management



**Aakash Raotole**  
Felix Advisory  
Investment Banking



**Aliasger Shafik**  
Felix Advisory  
Investment Banking



**Javvad Vakhawala**  
Felix Advisory  
Investment Banking



**Mukul Jain**  
Family Office  
Portfolio Management



**Sanket Singh**  
SEP Ventures  
Venture Capital



**Kavya Shah**  
Equirius Capital  
Investment Banking



# Recent Campus Placement

## Full Time Conversions



**Himanshu Bisani**



Axis Capital  
Investment Banking



**Pankti Doshi**



Felix Advisory  
Investment Banking



**Manav Shah**



India SME investments  
Venture Capital



**Pritul Jain**



India SME Investments  
Venture Capital



**Dhara Ganatra**



Portfolio Management  
Valuequest PMS



**Tanmay Gupta**



SEP Ventures  
Venture Capital



**Krisha Kansara**



Molecule Ventures  
Portfolio Management



**Deep Sangoi**



Yes Securities  
Investment Banking



**Vinit Gautam**



Yes Securities  
Investment Banking

En Route to Full Time



**Meet Bhat**  
SEP Ventures  
Venture Capital



**Pankaj Parab**  
Molecule Ventures  
Portfolio Management



**Keval Bhagat**  
Zebra Pro and Learn  
Equity Research



**Swapan Bansal**  
Zebra Pro and Learn  
Equity Research



**Megh Desai**  
Felix Advisory  
Investment Banking



**Alakmar Daudi**  
Family Office  
Portfolio Management



**Shivank Agarwal**  
Perfect Research  
Equity Research



**Jagjyot Nanra**  
EQ Capital  
Investment Banking



**Jinay Gandhi**  
Canpac  
Business Consulting



**Nitya Modi**  
Felix Advisory  
Investment Banking



**Pooja Jumani**  
Axis Capital  
Investment Banking



**Krish Narang**  
Arthya Investment PMS  
Portfolio Management



**Om Kapadia**  
MJK investments  
Equity Research



**Miraj Parikh**  
Felix Advisory  
Investment Banking



**Arham Shah**  
Alpha Invesco  
Equity Research



En Route to Full Time



**in** **Vins Rafaliya**  
Perfect Research  
Equity Research



**in** **Uday Bhatia**  
Felix Advisory  
Investment Banking



**in** **Anas Qureshi**  
Felix Advisory  
Investment Banking



**in** **JAYATI VYAS**  
Felix Advisory  
Investment Banking



**in** **Shivani Teli**  
India SME investments  
Private Equity



**in** **Yash Sonthaliya**  
Solidarity Investments  
Portfolio Management



**in** **Dhruv Doshi**  
Axis Capital  
Investment Banking



**in** **Avesh Bagadia**  
Piper Serica  
Portfolio Management



**in** **Maulik Chaudhari**  
Omkara Capital  
Equity Research



**in** **Yashowardhan Agarwal**  
Banyan Capital Advisors  
Portfolio Management



**in** **Parth Gohil**  
Omkara Capital  
Equity Research



**in** **Amatullah Manjiniwala**  
Bastion Capital Management  
Equity Research



**in** **Komal Ladha**  
Yellow Jersey Investment  
Equity Research



# What We Cover in FinBridge

## FinBridge Programme

### Book Reading Club

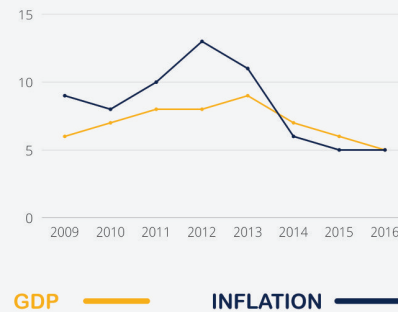


We learn through the best publications and movies  
in the genre of Psychology, Business and Finance



## Module: World Economy

### Analysing Key Economic Indicators

Economic  
Times

mint

Forbes

### Readings: Daily Financial Journals

### Cycles of Past Economic Bubbles and Bursts



### Assessment Method

Monthly group presentations and blog writing

## Module: Indian Financial System

### Basics of Indian Equity Markets



### Basics of Indian Debt Markets

### Basic Hedging Strategies





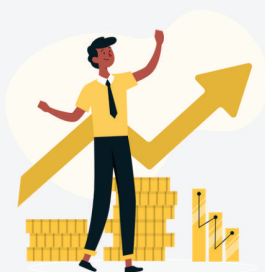
# FinBridge Programme



Finnacle  
Shah  
Classes

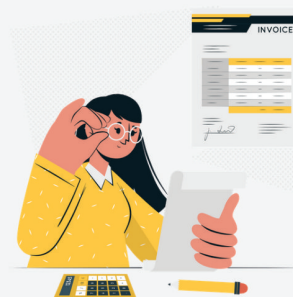
## Module: CFA Investment Foundation

### Global Capital Markets



### Basics of Investment Management

### Corporate Finance and Financial Analysis



### Assessment Method

Tested globally by CFA Institute, USA



Finnacle  
Shah  
Classes

[WWW.FINNACLESHAHCLASSES.COM](http://WWW.FINNACLESHAHCLASSES.COM)



## Module: Personal Finance & Wealth Management

### Systems of Asset Allocation



### Mutual Funds Analysis

### Creating Financial Plans and Key software used\*



### Assessment Method

Submit a live plan of your family

(\*) Added in Current Year



# FinBridge Programme



Finnacle  
Shah  
Classes

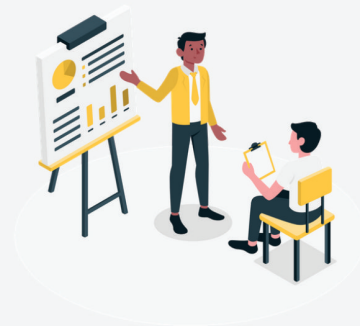
## Module: Advance TechEdge

### Excel Financial & Statistical Tools



### VBA Macros Coding

### Presentation Techniques



### Assessment Method

Working on live annual reports and corporate presentations

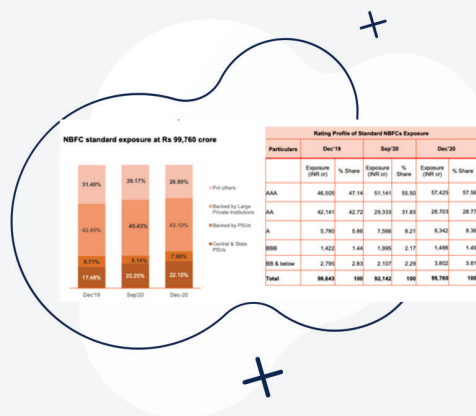


Finnacle  
Shah  
Classes

[WWW.FINNACLESHAHCLASSES.COM](http://WWW.FINNACLESHAHCLASSES.COM)

## Module: Financial Statement Analysis

75+ Live Case studies



Analysing Annual Reports & Old/New Accounting Standards

Detecting Accounting Irregularities



Sector Specific Accounting

Assessment Method

Project work on 20 Listed Companies





# FinBridge Programme



Finnacle  
Shah  
Classes

## Module: Business Analysis

**50+ Live Case Studies**



**Industry Coverage Reports**



**Company Analysis**



**Scuttlebutt**



### **Assessment Method**

Research work on sectors and companies – Blog Writing



Finnacle  
Shah  
Classes

[WWW.FINNACLESHAHCLASSES.COM](http://WWW.FINNACLESHAHCLASSES.COM)

## Module: Valuation & Financial Modeling

### 20 Valuation Methods



### Building Financial Models

### Merger & Acquisition Valuations



### Assessment Method

Create a financial model from scratch

## Module: Business Analysis

### Analysing Pitch Decks



### De-Coding SaaS and E-commerce Business Models\*

### Start Up Valuations



### Assessment Method

Preparing pitch on one key Indian start-up

(\*) Added in Current Year

# 10

# FinBridge Program

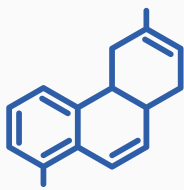
Module: Sector Analysis

Banking Industry



Real Estate Industry

IT Industry



Specialty Chemical Industry

Cement Industry



Pharma Industry



# Contact Us

## MUMBAI (Head Office)

**Address:** Finnacle Shah Classes, NADCO, Vivina -2B/13, 2nd Floor, opp Railway Station, Andheri West, Mumbai. 400058

**Mobile No:** 9869141435 | 9322255530 | 6355043018

**Email:** info@finnacle.co.in

**Branches in:** Dadar, Andheri, Borivali, Charni Road, Thane & Ghatkopar  
All mumbai branches within 5 minutes walking distance from station

## SURAT (Head Office)

**Address:** Finnacle Shah Classes, 3rd Floor, Money Arced, Vesu, Surat. 395007

**Mobile No:** 9157740227

**Email:** info@finnacle.co.in

## Vadodara

U Star Classes

**Address:** B-5, Silver Rock Complex, Makarpura, Vadodara 390014

Jagruti Classes

**Address:** 301, Chaturbhai Complex 2, Harani Warashiya, Harni Road, Vadodara 390006

Yashraj

**Address:** 215 Bluediamond Complex, Fatehgunj, Vadodara 390008

## Ahmedabad

Abhiyarthi Career Academy

**Address:** 3rd floor, Meru mount plaza, near Bandhan Bank, New Nikol, Ahmedabad.